

THE INFORMATION CONTAINED IN THIS DRAWING IS THE SOLE PROPERTY OF CANADA METAL (PACIFIC) LTD. ANY REPRODUCTION IN PART OR WHOLE WITHOUT THE WRITTEN PERMISSION OF CANADA METAL (PACIFIC) LTD IS PROHIBITED.

REVISION HISTORY

ZONE	REV	DESCRIPTION	DD/MM/YYYY	APPROVED (NAME)	APPROVED (SIGNATURE)
~	NEW	CREATED NEW DRAWING	~	~	~

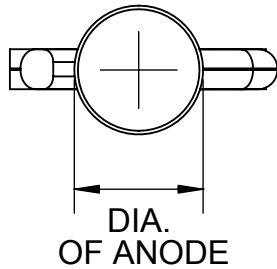
ACID RESISTANT COATING
CAST BRASS ALLOY HOOK

BLUE PLASTIC COATING
ACID RESISTANT

LEAD ALLOY STUB

WELD

LENGTH

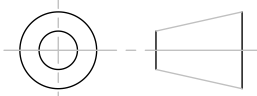


MATERIAL ALLOY : _____

DIA.: _____ LENGTH _____

UNLESS OTHERWISE SPECIFIED DIM ARE IN IMPERIAL
 3 PL ± .005"
 2 PL ± .010"
 1 PL ± .020"
 NO DECIMAL PLACE OR FRACTIONAL DIM ± .030"
 ANGLE ± .5°, SURFACE ROUGHNESS 125 micro in MAX.
 INTERPRET DRAWING PER: ASME Y14.5M-1994
 ASME Y14.3M-1994
 ASME Y14.1-1995

THIRD ANGLE PROJECTION



POSITION	NAME	SIGNATURE	DATE DD/MM/YYYY
DRAWN	JOHNNY	JOHNNY CHEUNG	06/JUL/2007
CHECKED	~	~	~
DESIGN	PC	~	06/JUL/2007
APPROVED	~	~	~

CANADA METAL (PACIFIC) LIMITED
 • FOUNDRY
 • DIECAST
 • CNC MACHINING
 7733 PROGRESS WAY, DELTA, B.C. CANADA V4G 1A3
 PHONE: (604) 940-2010 FAX: (604) 952-2653

TITLE LEAD ANODE WITH HOOK			
SIZE A	PART IDENTIFICATION NO. LANODEWH	DWG. NO. CMLANODEWH01	REV. A
SCALE	MATERIAL	WEIGHT	SHEET 1 OF 1