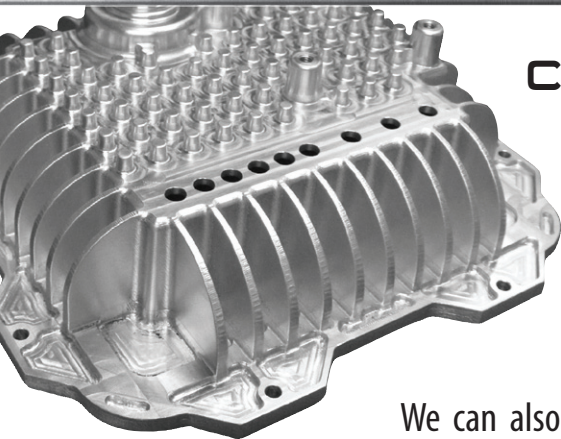


CNC MACHINING



CMP GLOBAL LIMITED specializes in small to medium parts manufacturing, CNC turning and CNC milling for the marine, telecommunications, transportation and forestry industries to name a few.

We always ensure that our customers receive machined components with absolute accuracy and within critical tolerances.

CMP Global is experienced in machining both ferrous and non-ferrous metals. We can also machine plastics and rubber. We have a wide range of machinery from, horizontal and vertical 4 axis machining centers, and 3 axis turning centers. Below are more specific details about our equipment.

WHAT IS CNC MACHINING?

Computer Numerical Control (CNC) Machining makes the machining process automated. The computer controller deciphers G-Code and M-Code (written programs) to determine tool path for selective material removal.

Machining used to be a manual process which introduced a significant potential for human error. By making the process computer controlled, the machining is more consistent and lends itself well to mass production.

HORIZONTAL CNC CENTERS

Mori Seiki SH-400

Work Envelope: 22" x 20" x 20"
(560mm x 505mm x 505mm)

Spindle Speed: 12,000 rpm

HAAS HS1-RP

Work Envelope: 22" x 20" x 20"
(560mm x 505mm x 505mm)

Spindle Speed: 7,500 rpm

HAAS EC-400

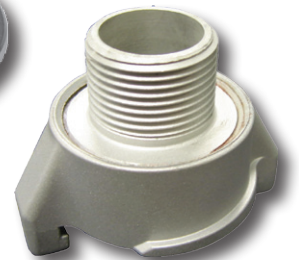
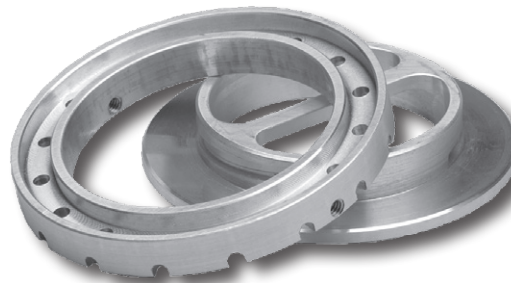
Work Envelope: 20" x 20" x 20"
(505mm x 505mm x 505mm)

Spindle Speed: 8,000 rpm

KIA HS500i

Work Envelope: 33.5" x 27.5" x 29.5"
(850mm x 700mm x 750mm)

Spindle Speed: 12,000 rpm



CNC MACHINING



VERTICAL CNC CENTERS

Mori Seiki SV-503 (4 Axis capable)

Work Envelope: 30" x 20" x 20"
(760mm x 505mm x 505mm)
Spindle Speed: 10,000 rpm

HAAS VF-0 (4 Axis capable)

Work Envelope: 20" x 16" x 15"
(505mm x 405mm x 380mm)
Spindle Speed: 6,000 rpm

HAAS VF-2 (4 Axis capable)

Work Envelope: 30" x 15" x 15"
(760mm x 380mm x 380mm)
Spindle Speed: 7,500 rpm

Feeler VM-32

Work Envelope: 31.5" x 20.5" x 20"
(800mm x 520mm x 505mm)
Spindle Speed: 8,000 rpm

Feeler VMP-40A (4 Axis capable)

Work Envelope: 40" x 20.5" x 20"
(1020mm x 520mm x 505mm)
Spindle Speed: 10,000 rpm

TURNING CENTERS

HAAS HL-1

Max Diameter: 10" (255mm)
Speed: 3,700 rpm

EMCO Maxxturn 65 (w/Live tooling)

Max Diameter: 19.6" (500mm)
Max Bar Diameter: 2.75" (70mm)
Speed: 5,000 rpm

EMCO 345-II (w/Live tooling)

Max Diameter: 8.7" (220mm)
Max Bar Diameter: 1.8" (45mm)
Speed: 6,300 rpm

Okuma Captain L370M (w/Live tooling)

Max Diameter: 14.5" (370mm)
Max Bar Diameter: 2.4" (62mm)
Speed: 4,000 rpm

OWN PTM-20 (w/Live tooling)

Max Diameter: 0.78" (20mm)
Speed: 6,000 rpm

